

7 Black Wattle Avenue Epsom VIC

3 2 2

Laid out with two separate living zones, the home features a lounge at the front and a central open-plan kitchen, dining and living space. Equipped with gas cooktop, electric oven, dishwasher and double sink, the kitchen is ready for anything the most discerning cook could throw at it.

The master bedroom is completed by a three-piece ensuite and walk-in robe while the remaining two bedrooms are tucked off the rear hall and serviced by the family bathroom.

Outside, the yard is spacious and private creating the ideal space for kids to play.

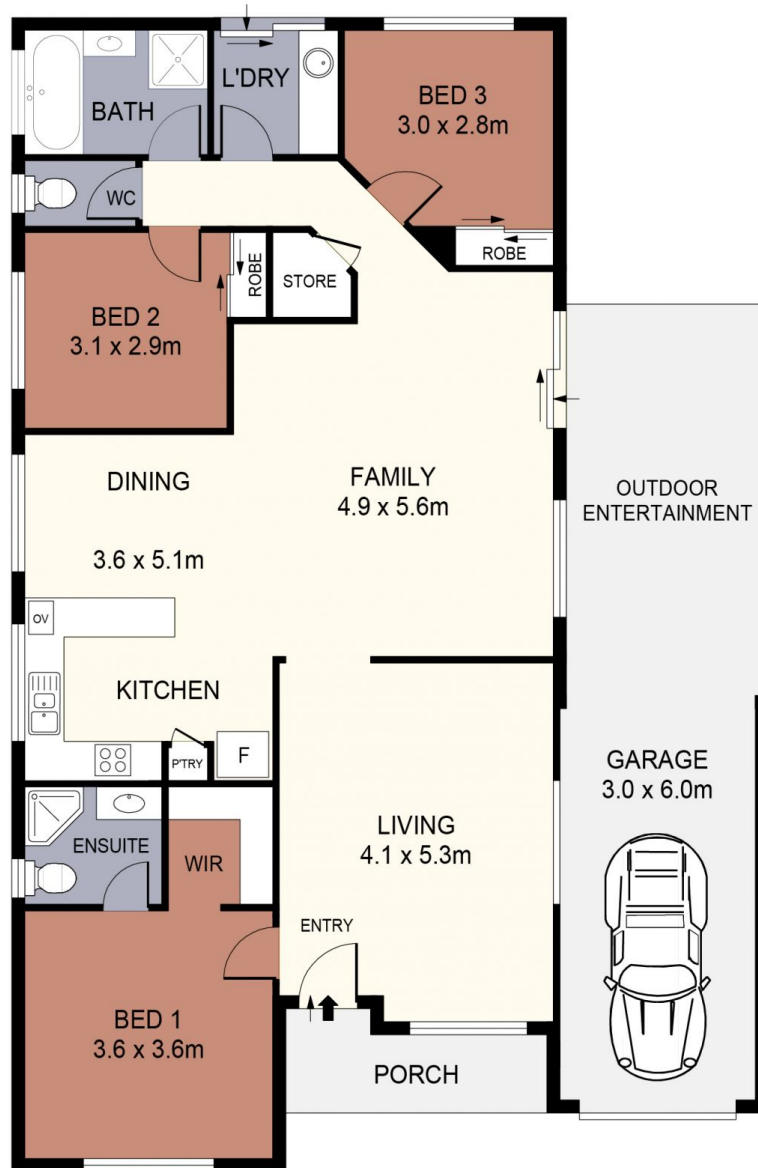
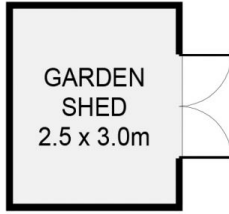
All this situated in Acacia Park Epsom and only a short

[For full version visit the website](https://www.janellestevens.com.au)

Type : House
Land Size : 437 sqm
View : <https://www.janellestevens.com.au/lease/vic/greater-bendigo-region/epsom/residential/house/8321797>



Jocelyn Heazlewood
0417 835 127



SCALE IN METRES. INDICATIVE ONLY. DIMENSIONS ARE APPROXIMATE. ALL INFORMATION CONTAINED HEREIN IS GATHERED FROM SOURCES WE BELIEVE TO BE RELIABLE. HOWEVER WE CANNOT GUARANTEE ITS ACCURACY AND INTERESTED PARTIES SHOULD RELY ON THEIR OWN ENQUIRIES.
Ref. No: 240725

	➤
INT	: 143m ²
PORCH	: 5m ²
GARAGE	: 18m ²
GARDEN SHED	: 8m ²
OUTDOOR ENTERTAINMENT	: 18m ²

7 BLACK WATTLE AVENUE