

3/48 Houlahan Street Flora Hill VIC

3 1 2

This enticing split-level townhouse in the ever-popular Flora Hill is within easy walking distance to La Trobe University, Strath/Kennington Village shopping, cafes/restaurants, Bendigo South East College, public transport, medical and sporting facilities. Being the rear of three townhouses on the block, it enjoys a private, larger-than-average rear garden.

Accommodation includes a spacious living room with split system air conditioning and gas heating, a separate light-filled dining room and a well-equipped kitchen boasting gas/electric cooking, a dishwasher, a double pantry, and ample bench space. A generous bedroom with built-in robe, a separate laundry, a linen cupboard, walk-in storage under the stairs and toilet complete the lower level.

[For full version visit the website](https://www.janellestevens.com.au)

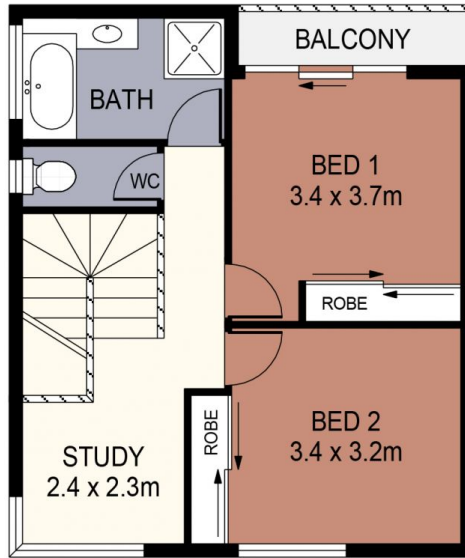
**Type** : Townhouse  
**Price** : \$ 515,000  
**Land Size** : 331 sqm  
**View** : <https://www.janellestevens.com.au/sale/vic/greater-bendigo-region/flora-hill/residential/townhouse/8171736>



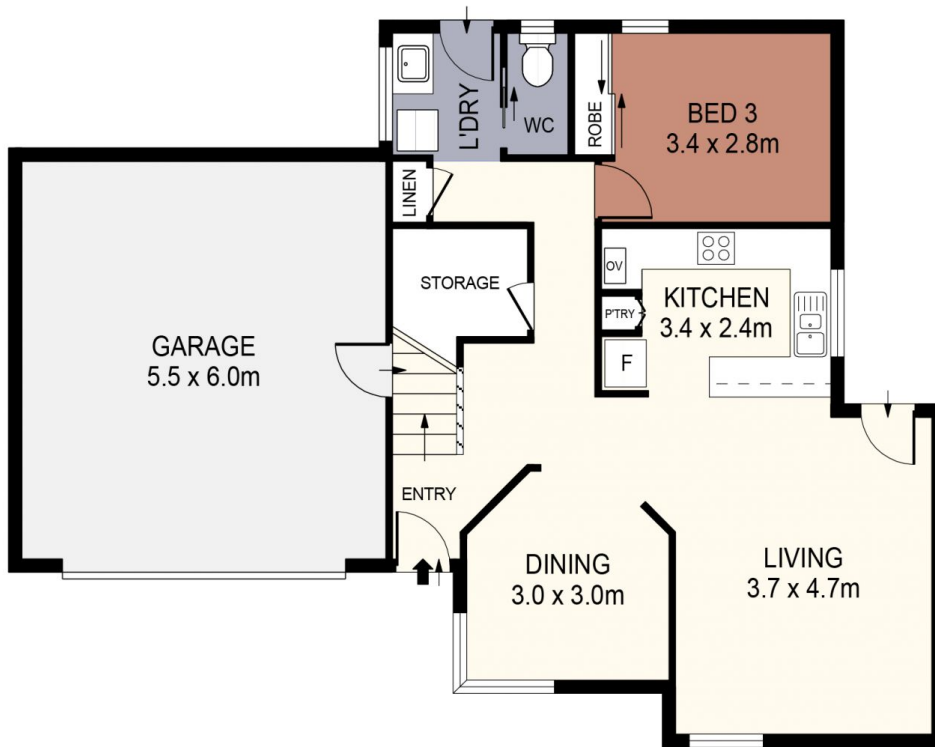
**Mitch Kenny**  
0417 835 127



**Janelle Stevens**  
0417 835 127



**FIRST FLOOR**



**GROUND FLOOR**



SCALE IN METRES. INDICATIVE ONLY. DIMENSIONS ARE APPROXIMATE. ALL INFORMATION CONTAINED HEREIN IS GATHERED FROM SOURCES WE BELIEVE TO BE RELIABLE. HOWEVER WE CANNOT GUARANTEE ITS ACCURACY AND INTERESTED PARTIES SHOULD RELY ON THEIR OWN ENQUIRIES.  
Ref. No: 241024

INT	:	129m <sup>2</sup>
GARAGE	:	33m <sup>2</sup>
BALCONY	:	3m <sup>2</sup>

3/48 HOULAHAN STREET