



This property is
under application

For more information on available properties
visit [janellestevens.com.au](https://www.janellestevens.com.au)



9 Northmoor Drive Strathdale VIC

3 2 2

This property offers a perfect blend of comfort, style, and functionality.

Nestled in a peaceful neighbourhood, this home is designed to cater to the modern family's needs.

Three spacious bedrooms, each equipped with built-in robes, providing ample storage space for your belongings. The main bedroom boasts the added luxury of an ensuite, offering privacy and convenience.

Enjoy the open-plan layout featuring kitchen, meals, and living area, creating a central hub for everyday living and entertaining. Additionally, a separate formal lounge to the front of the house provides a cozy retreat for relaxation or

Type : House

View : <https://www.janellestevens.com.au/lease/vic/greater-bendigo-region/strathdale/residential/house/8007114>

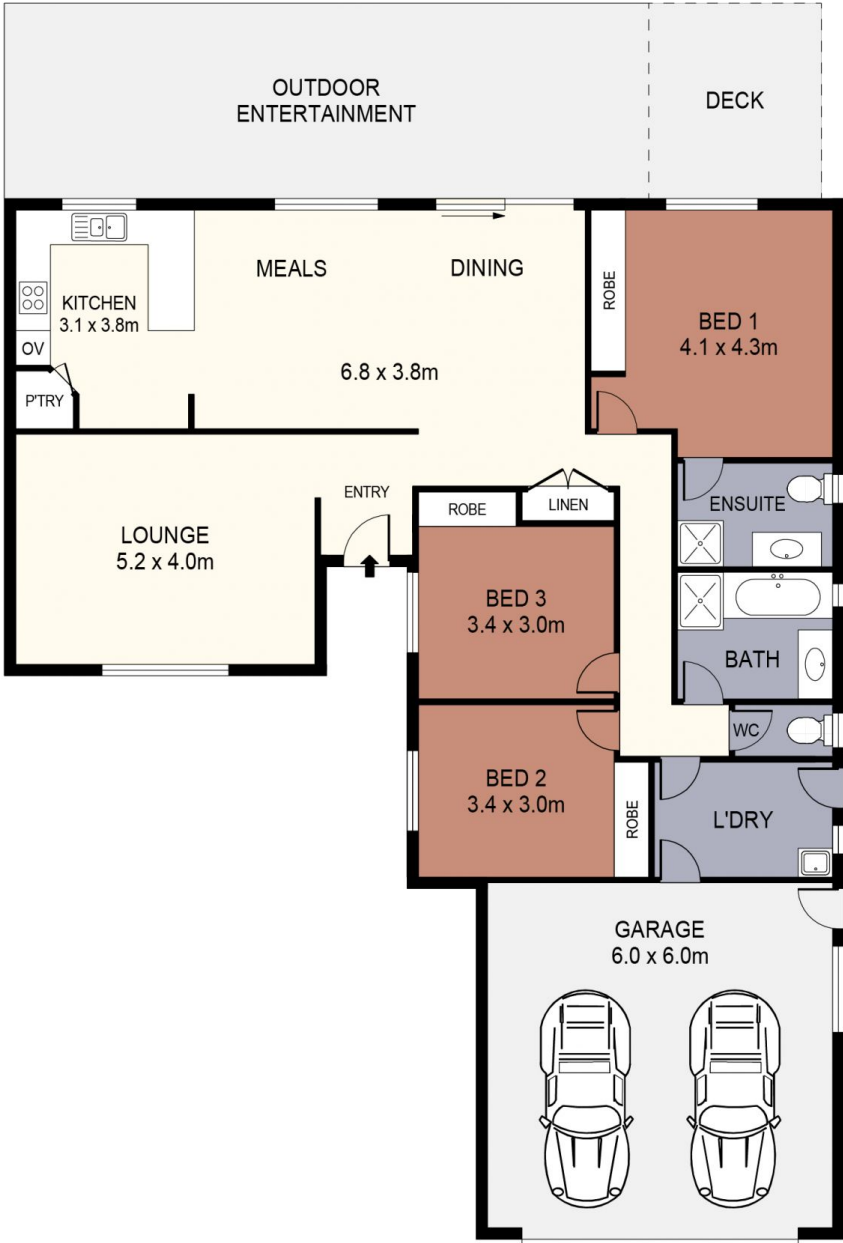
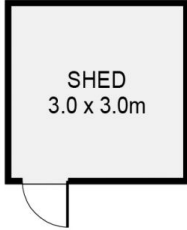


Jodi Carlyon
0417 835 127



Janelle Stevens
0417 835 127

[For full version visit the website](https://www.janellestevens.com.au)



SCALE (METRES)

SCALE IN METRES. INDICATIVE ONLY. DIMENSIONS ARE APPROXIMATE. ALL INFORMATION CONTAINED HEREIN IS GATHERED FROM SOURCES WE BELIEVE TO BE RELIABLE. HOWEVER WE CANNOT GUARANTEE ITS ACCURACY AND INTERESTED PARTIES SHOULD RELY ON THEIR OWN ENQUIRIES.
Ref. No: 240508

INT	:	149m ²
SHED	:	9m ²
DECK	:	10m ²
GARAGE	:	36m ²
OUTDOOR ENTERTAINMENT	:	38m ²



9 NORTHMORE DRIVE