



## 8 Wallaroo Avenue Strathfieldsaye VIC

3 2 2

Situated in the Imagine Estate sits this quality family home.

Featuring three bedrooms, main with walk in robe and ensuite with large shower, double vanities and separate toilet. Other two bedrooms with built in robes are in their own wing along side the three piece bathroom and separate toilet.

To the rear of the home you'll find the extensive kitchen with walk in pantry, electric oven, gas cooktop and plenty of cupboards and bench space. Large windows allowing for plenty of natural light and airflow. Tiled dining and living areas plus carpeted formal lounge room.

Laundry with plenty of cupboard space and ducted heating and cooling complete the internal of this home.

**Price** : \$530 per week

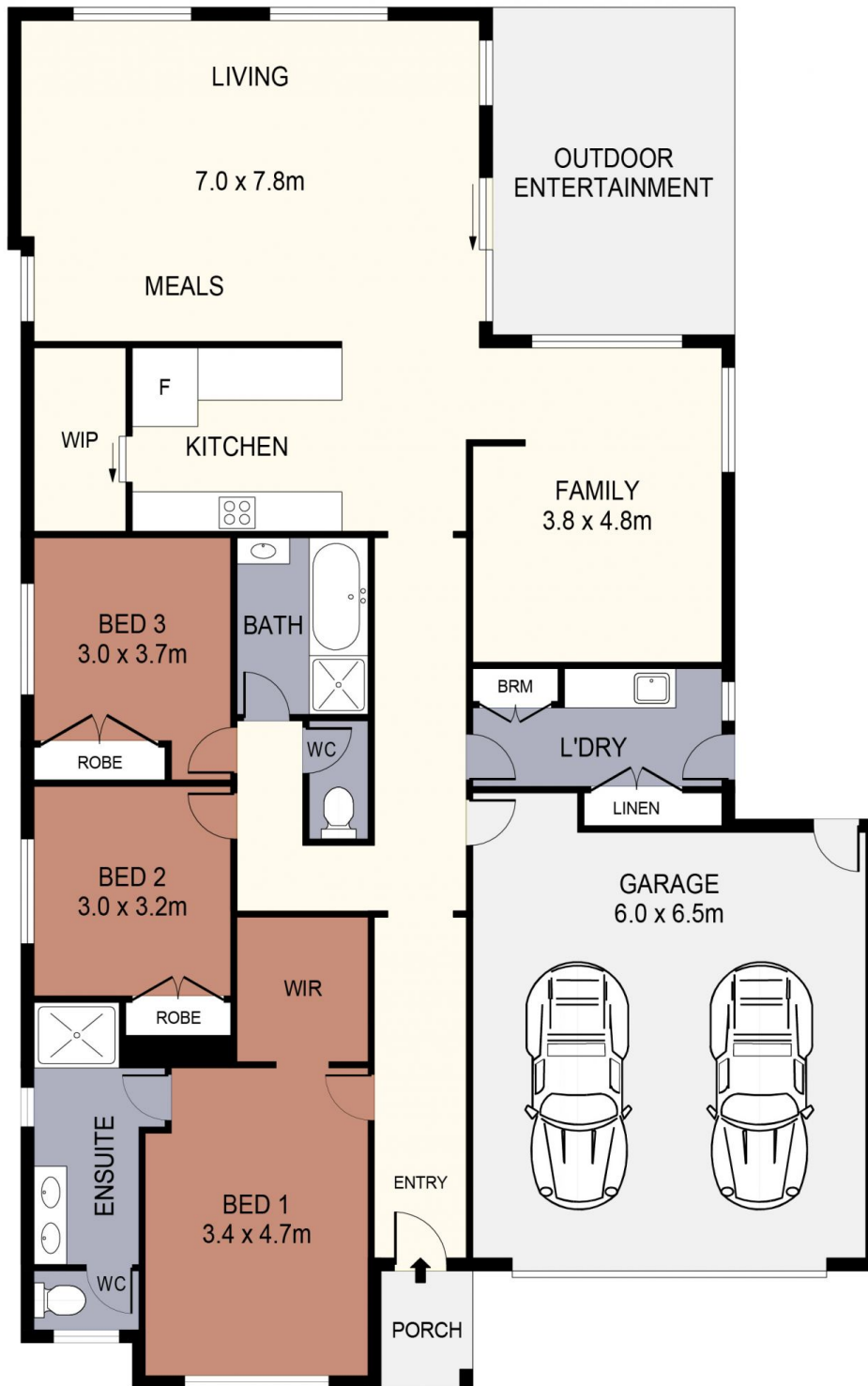
**View** : <https://www.janellestevens.com.au/lease/vic/greater-bendigo-region/strathfieldsaye/residential/house/7990408>



**Jocelyn Heazlewood**  
0417 835 127



**Janelle Stevens**  
0417 835 127



**SCALE (METRES)**

SCALE IN METRES. INDICATIVE ONLY. DIMENSIONS ARE APPROXIMATE. ALL INFORMATION CONTAINED HEREIN IS GATHERED FROM SOURCES WE BELIEVE TO BE RELIABLE. HOWEVER WE CANNOT GUARANTEE IT'S ACCURACY AND INTERESTED PARTIES SHOULD RELY ON THEIR OWN ENQUIRIES.  
Ref. No. 240511

INT	:	177m <sup>2</sup>
PORCH	:	3m <sup>2</sup>
GARAGE	:	40m <sup>2</sup>
OUTDOOR ENTERTAINMENT	:	18m <sup>2</sup>

**8 WALLAROO AVENUE**