



## 28 Bassett Drive Strathfieldsaye VIC

3 1 3

Whether you are entering the market for the first time, investing or finding your next home, this is a home to add to your list.

The home is setup with a long central hallway with open plan living at the back. Complete with gas cooktop, electric oven, dishwasher and island bench, the kitchen is setup to provide ample space to prepare dinner for the growing family while looking out to the large rear yard.

The living and dining space is large enough to accommodate an additional desk for a study area, while remaining open and connected.

Each bedroom is generously proportioned and complete with built in robes.

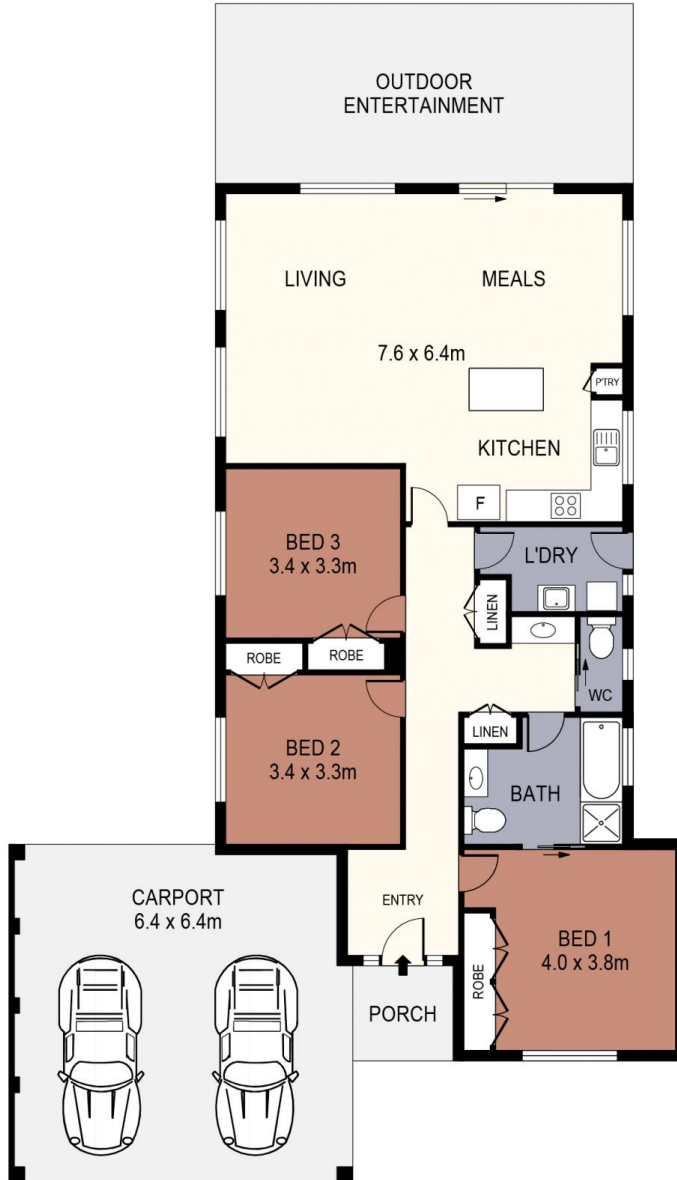
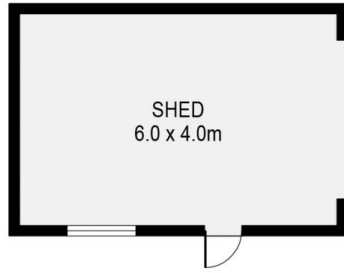
**Price** : \$560,000 - \$595,000  
**Land Size** : 746 sqm  
**View** : <https://www.janellestevens.com.au/sale/vic/greater-bendigo-region/strathfieldsaye/residential/house/7986026>



**Mitch Kenny**  
0417 835 127



**Janelle Stevens**  
0417 835 127



**SCALE (METRES)**

SCALE IN METRES. INDICATIVE ONLY. DIMENSIONS ARE APPROXIMATE. ALL INFORMATION CONTAINED HEREIN IS GATHERED FROM SOURCES WE BELIEVE TO BE RELIABLE. HOWEVER WE CANNOT GUARANTEE ITS ACCURACY AND INTERESTED PARTIES SHOULD RELY ON THEIR OWN ENQUIRIES.  
Ref. No: 240418

INT	:	124m <sup>2</sup>
SHED	:	24m <sup>2</sup>
PORCH	:	3m <sup>2</sup>
CARPORT	:	41m <sup>2</sup>
OUTDOOR ENTERTAINMENT	:	26m <sup>2</sup>

28 BASSETT DRIVE

STRATHFIELDSAYE