



1-7/25A Havlin Street East Kennington VIC

2 1 1

This well-maintained unit complex comprising seven single-level apartments presents the perfect opportunity for savvy investors and self-managed super funds or even those looking to get into the market for the first time or downsize their home.

**Price** : \$310,000 - \$330,000 each

**View** : <https://www.janellestevens.com.au/sale/vic/greater-bendigo-region/kennington/residential/unit/7955609>

Available to be purchased individually or all as one, each of these properties would be a great addition to your portfolio or perfect place to start your home ownership journey.

Each two-bedroom unit includes designated carport parking. Embraced by leafy, easy-care landscaping, the development promises high rental yields and exceptional capital growth potential.

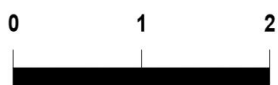
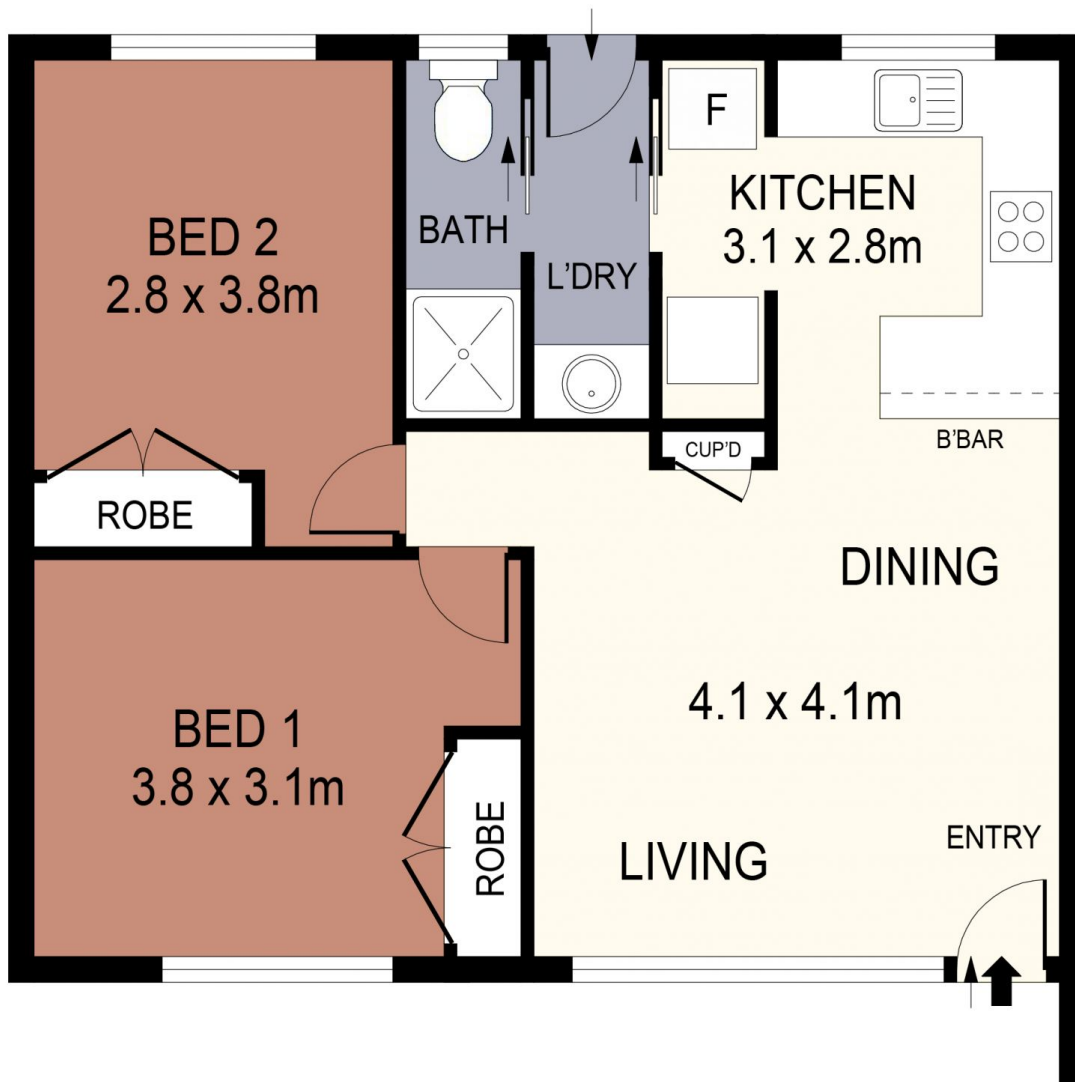
Completely refurbished, the units sit on an expansive 1637m<sup>2</sup> (approx.) block offering an enticing prospect for



**Mitch Kenny**  
0417 835 127



**Janelle Stevens**  
0417 835 127



SCALE (METRES)

SCALE IN METRES. INDICATIVE ONLY. DIMENSIONS ARE APPROXIMATE. ALL INFORMATION CONTAINED HEREIN IS GATHERED FROM SOURCES WE BELIEVE TO BE RELIABLE. HOWEVER WE CANNOT GUARANTEE ITS ACCURACY AND INTERESTED PARTIES SHOULD RELY ON THEIR OWN ENQUIRIES.  
Ref. No: 240314

INT : 62m<sup>2</sup>

6/25A HAVLIN STREET EAST