



## 4 Theodore Street Flora Hill VIC

2 1 1

\*\*\* Viewing of this property is strictly by appointment online. Please call Mitch on 0400601779 or send an enquiry to arrange an inspection \*\*\*

Nestled in the heart of the sought-after Flora Hill area, this picturesque 1950s brick residence boasts a delightful curved front porch adorned with art-deco-inspired wrought iron balustrading.

Several internal features of the era remain intact, including gleaming polished floorboards, ornate cornices, picture rails and mantelpiece in the lounge.

Accommodation includes two generously sized bedrooms featuring ceiling fans, adjoining lounge and dining rooms, and an updated kitchen and bathroom.

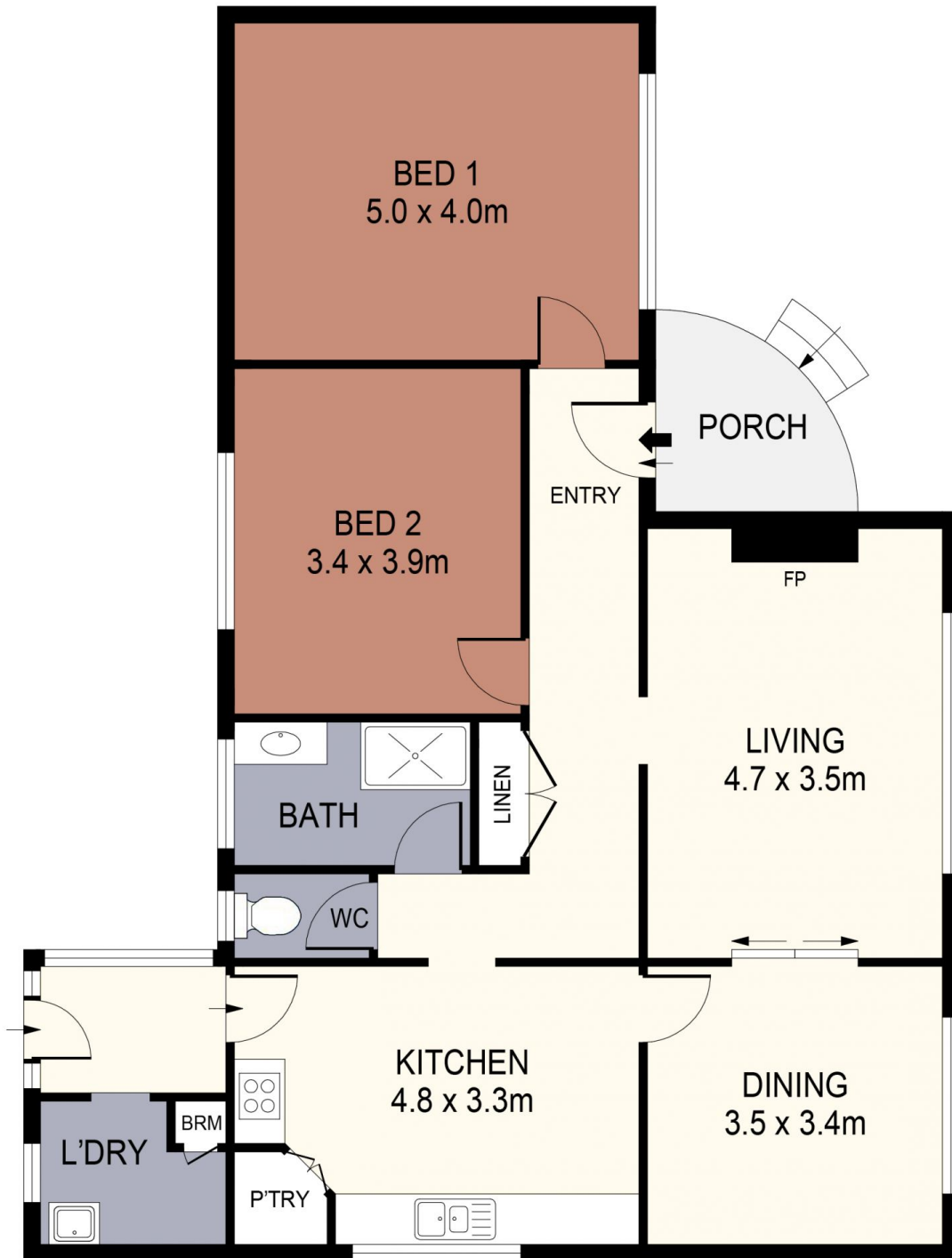
**Price** : \$395,000 - \$430,000  
**Land Size** : 411 sqm  
**View** : <https://www.janellestevens.com.au/sale/vic/greater-bendigo-region/flora-hill/residential/house/7949085>



**Mitch Kenny**  
0417 835 127



**Janelle Stevens**  
0417 835 127



SCALE (METRES)

SCALE IN METRES. INDICATIVE ONLY. DIMENSIONS ARE APPROXIMATE. ALL INFORMATION CONTAINED HEREIN IS GATHERED FROM SOURCES WE BELIEVE TO BE RELIABLE. HOWEVER WE CANNOT GUARANTEE ITS ACCURACY AND INTERESTED PARTIES SHOULD RELY ON THEIR OWN ENQUIRIES.  
Ref. No: 240313

INT : 119m<sup>2</sup>  
PORCH : 5m<sup>2</sup>

4 THEODORE STREET