



### 3/174 Retreat Road Spring Gully VIC

2 1 1

Inspection of this property is strictly by appointment only. Please call Mitch on 0400 601 779 to arrange an inspection time.

Fresh from a modern makeover, this brick veneer townhouse set in a serene landscaped complex is ready for new owners to benefit from its chic new look.

The residence enjoys passive solar characteristics with North-facing clerestory and picture windows filtering sunlight into the bedroom, living and dining rooms.

The separate living room boasts a space-adding raked ceiling and split system heating/cooling, while the dining area overlooks the front gardens. The all-new kitchen equipped for the keen cook includes an electric cooktop/under-bench oven, a dishwasher, ample bench

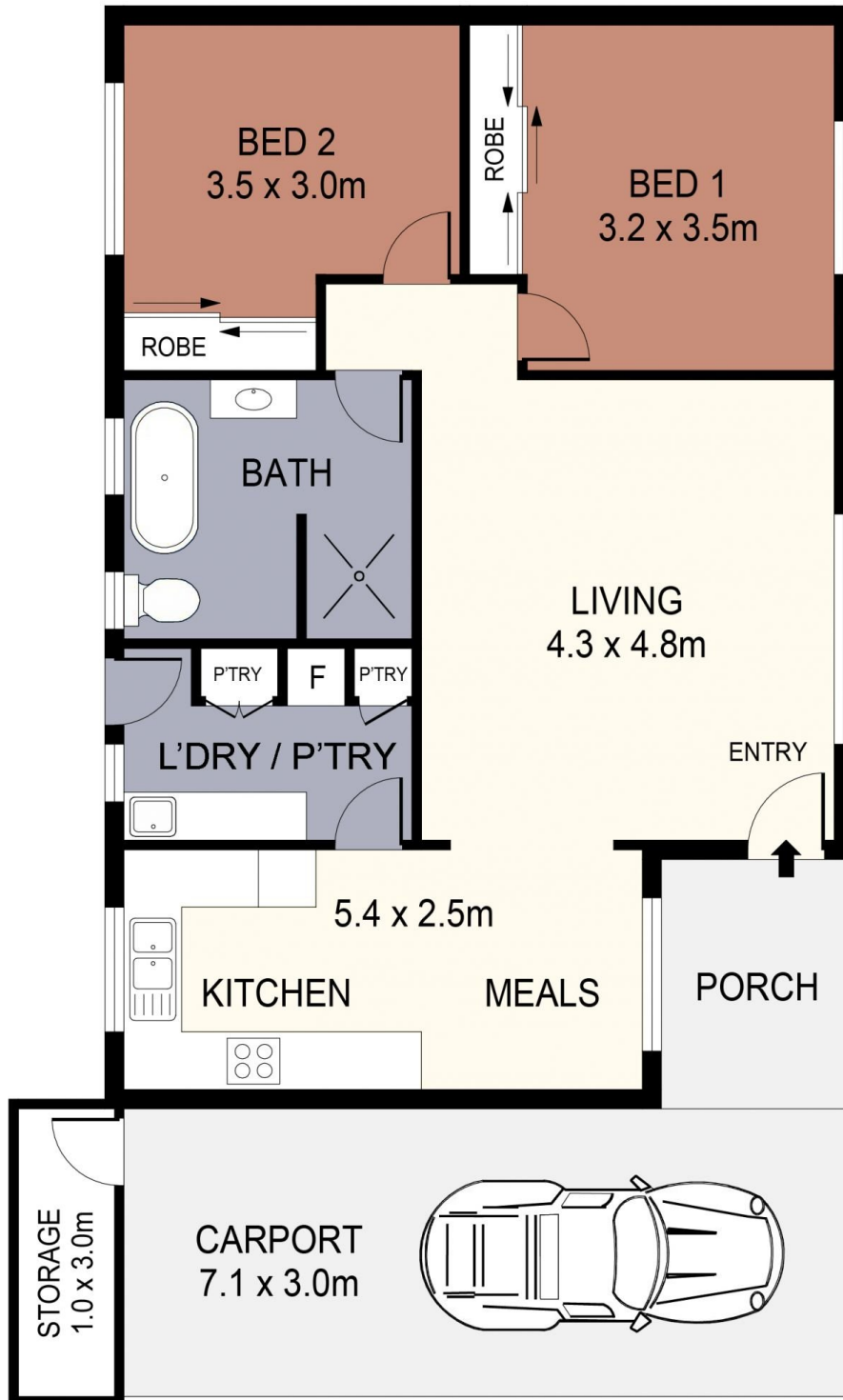
**Price** : \$ 435,000  
**Land Size** : 220 sqm  
**View** : <https://www.janellestevens.com.au/sale/vic/greater-bendigo-region/spring-gully/residential/unit/7775709>



**Mitch Kenny**  
0417 835 127



**Janelle Stevens**  
0417 835 127



SCALE (METRES)

SCALE IN METRES. INDICATIVE ONLY. DIMENSIONS ARE APPROXIMATE. ALL INFORMATION CONTAINED HEREIN IS GATHERED FROM SOURCES WE BELIEVE TO BE RELIABLE. HOWEVER WE CANNOT GUARANTEE IT'S ACCURACY AND INTERESTED PARTIES SHOULD RELY ON THEIR OWN ENQUIRIES.  
Ref. No: 230510



INT	:	85m <sup>2</sup>
PORCH	:	5m <sup>2</sup>
STORAGE	:	3m <sup>2</sup>
CARPORT	:	21m <sup>2</sup>

3/174 RETREAT ROAD