

16 Inverness Drive Junortoun VIC

3 2 2

Delightful in every aspect, this contemporary home designed with functionality in mind offers generous spaces for families, retirees or investors looking for a modern lifestyle with a manageable garden.

It's an affordable chance to settle in the prestigious Mclvor Forest Estate.

Set on an elevated approx 478m² lot, the spacious family home has three good-sized bedrooms, two bathrooms and two separate living areas. All bedrooms include robes, while the main has a walk-in plus a thoroughly modern ensuite with an oversized shower.

The home features a spacious open-plan kitchen/meals/living room opening to an extensive decked and covered alfresco area. The kitchen is ready for

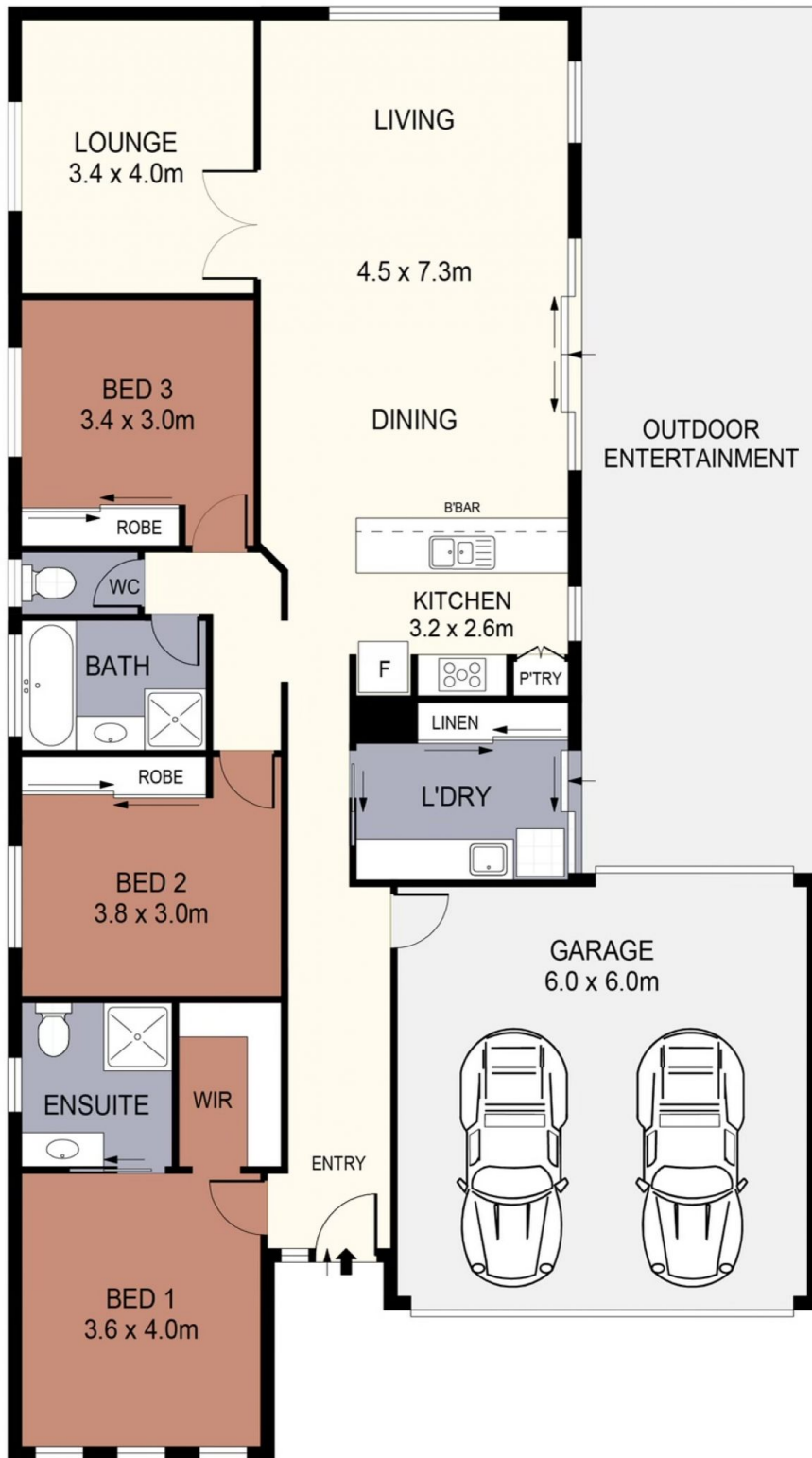
Price : \$ 650,000
Land Size : 478 sqm
View : <https://www.janellestevens.com.au/sale/vic/greater-bendigo-region/junortoun/residential/house/7561996>



Mitch Kenny
0417 835 127



Janelle Stevens
0417 835 127



SCALE (METRES)

SCALE IN METRES. INDICATIVE ONLY. DIMENSIONS ARE APPROXIMATE. ALL INFORMATION CONTAINED HEREIN IS GATHERED FROM SOURCES WE BELIEVE TO BE RELIABLE. HOWEVER WE CANNOT GUARANTEE ITS ACCURACY AND INTERESTED PARTIES SHOULD RELY ON THEIR OWN ENQUIRIES.

INT : 140m²
 GARAGE : 36m²

16 INVERNESS DRIVE