



## 2B Flora Lane Flora Hill VIC

2 2 1

This trendy two-storey townhouse offers the ultimate low-maintenance lifestyle. It presents a top opportunity, positioned in a quiet street within walking distance from LaTrobe University, Strath and Kennington Village shops, public transport and a five-minute drive to the centre of Bendigo.

The ground level offers a spacious living environment with open-style kitchen, meals and living areas flowing through glass sliders to a covered alfresco area and private rear garden.

The kitchen is fitted with quality stainless steel cooking appliances, a dishwasher, a large waterfall-end island bench/breakfast bar, and ample storage featuring a double pantry.

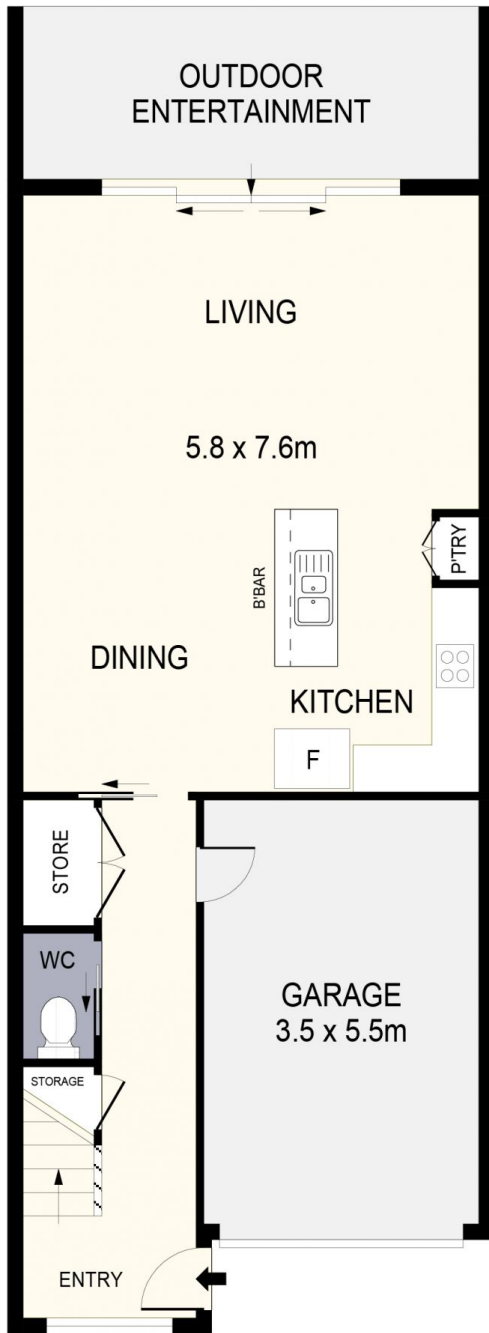
**Price** : \$480,000 - \$520,000  
**Land Size** : 164 sqm  
**View** : <https://www.janellestevens.com.au/sale/vic/greater-bendigo-region/flora-hill/residential/townhouse/7512167>



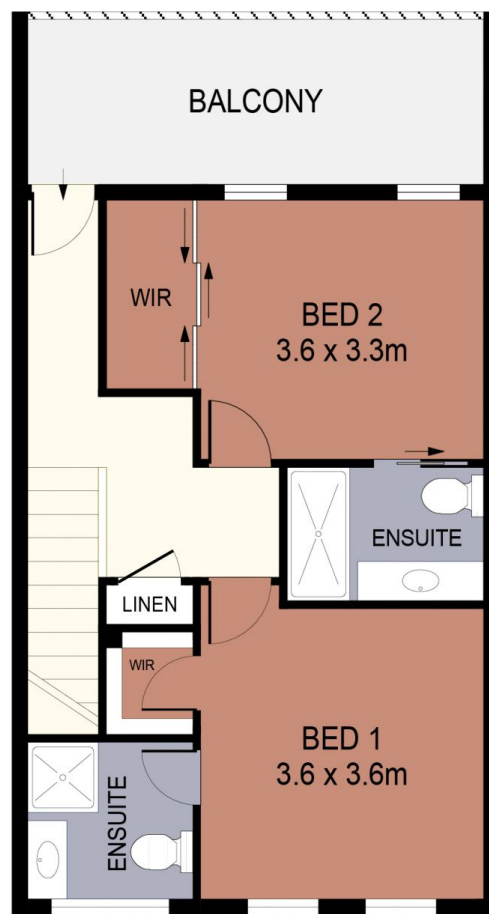
**Janelle Stevens**  
0417 835 127



**Mitch Kenny**  
0417 835 127



**GROUND FLOOR**



**FIRST FLOOR**



SCALE IN METRES. INDICATIVE ONLY. DIMENSIONS ARE APPROXIMATE. ALL INFORMATION CONTAINED HEREIN IS GATHERED FROM SOURCES WE BELIEVE TO BE RELIABLE. HOWEVER WE CANNOT GUARANTEE ITS ACCURACY AND INTERESTED PARTIES SHOULD RELY ON THEIR OWN ENQUIRIES.  
Ref. No. 230214

INT	:	110m <sup>2</sup>
GARAGE	:	19m <sup>2</sup>
BALCONY	:	12m <sup>2</sup>
OUTDOOR ENTERTAINMENT	:	12m <sup>2</sup>

2B FLORA LANE